

# WU Pro Series 16x9 Ratio

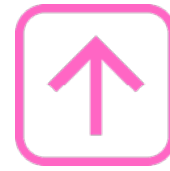
ATS-PRO INDOOR HD DIRECT VIEW LED WALLS

ATS  
PRO®

Taylorleds

2023 ATS-PRO WU PRO SERIES MODULAR INDOOR LED MADE FOR ATS-PRO BY

**Taylorleds**



## Elevate the LED Experience

Taylorleds is an innovative, integrity minded joint-venture focused on providing State of the Art LED products. Absen owns 80% of Taylorleds and manufactures most of Taylorleds LED Display products while Design, R&D and QC are handled by Taylorleds. Absen is a public-listed Chinese LED Display manufacturer.

With decades of experience dealing in OEM manufacturing and our Un-matched Internal Design and Engineering, ATS-Pro introduces our newest and most advanced line of indoor LED systems. Every facet of the Design has been meticulously thought out. Mechanical Design, Visual Graphic Electronics, Installation, Reliability, Service and Support, Multiple Resolutions and LED Processing Systems to fit any budget.



Ultra Slim Profile



Cableless



Wall Mounting/  
Hanging/Stacking



6-axis Alignment



16:9 Aspect Ratio



Dual Power and  
Signal Available

2023 ATS-PRO WU PRO SERIES MODULAR INDOOR LED MADE FOR ATS-PRO BY:

**Taylorleds**



# Unrivaled Graphics Performance

Novastar A10s Pro Card and MX COEX Series VMP Platform



NovaStar's solution is specially designed for camera shooting scenarios, and can effectively solve problems with black field and scan lines. This solution features industry-leading image boosting technology, which helps users create shooting scenes more comparable to real environments. This solution is driven by NovaStar's all-new LED control platform VMP, which integrates design, monitoring, and management, bringing users the ultimate control experience.

## Frame Multiplexing

Supports frame multiplexing allowing users to reframe multiple video feeds in the same time field. Utilizing the camera's genlock phase offset, it becomes possible to output multiple effects simultaneously within a single shooting scene, improving work efficiency and reducing cost.



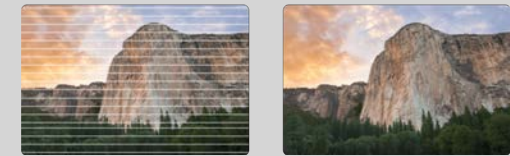
## Shutter Fit

Supports synchronization of LED display refresh rate and camera shutter parameters, allowing the LED display to automatically adapt to camera exposure time and frequency, alleviating scan lines.



## Phase Offset

Adjusting the output phase offset value allows the LED display and camera to perfectly match. This helps prevent black field and image tearing from being captured by the camera when shooting the LED display.



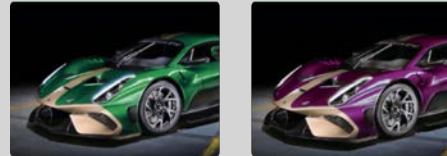
## HFR

Supports high frame rates up to 120Hz, 144Hz, or even 240Hz. This allows smooth representation of video featuring high-speed moving objects.



## Color Replacement

Supports unrestricted color replacement, with minimal impact on other colors.



## 14CH Color Correction

Precise adjustment of hue, saturation, and brightness of primary, secondary and tertiary colors, with basic adjustment of black and white, ensuring perfect colors that retain their intended beauty.



A10s Pro card works with all Novastar Processors such as the H-Series, VX and MCTRL but does not offer all of the features of the MX Series Processors.

# Unrivaled Graphics Performance

WU Pro turbo-charged with the A10sPro Card and MX COEX Series VMP Platform



By making the the WU Pro come standard with the Novastar A10s Pro Receiving Card, we upgraded the IC's to take full advantage of the most powerful Graphics Engine and Processing available on the market today. With the exceptional, elegant design of the WU Pro Series and the Powerful new COEX MX Series Processors , the WU Pro Elevates the LED Experience by providing - State of the Art - color, operational control and advanced Camera Correction features.

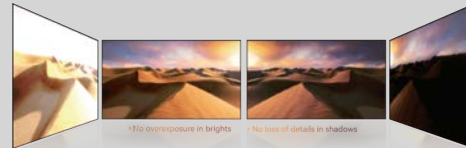
## Color Curve + 3D LUT

Curve adjustment and importing of 3D LUT files let you manage color in creative and artistic ways, just like a Hollywood colorist.



## Contrast + Black level

Allows independent adjustment of highlights and shadows by contrast and black level, avoiding overexposure in bright content but delivering rich details in dark content.



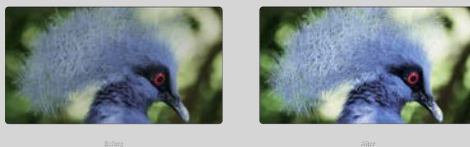
## Scenario Presets

Different display requirements are necessary to meet the needs of different shooting scenarios. Presets allow users to save settings in advance, including brightness, color temperature, gamma, and more, all retrievable with a single button press.



## Dual Image Booster

The all-new MX series solution is equipped with Image Booster 2.0 and Dynamic Booster technologies, which can improve the performance of grayscale, color and contrast ratio, creating an immersive view to fulfill the requirements necessary for xR applications.



## MX40 PRO

MX40 PRO and VMP software is an all-new display control software that integrates design, management, and monitoring into one single powerful platform when paired with the A10s Pro receiving card for stunning image quality.



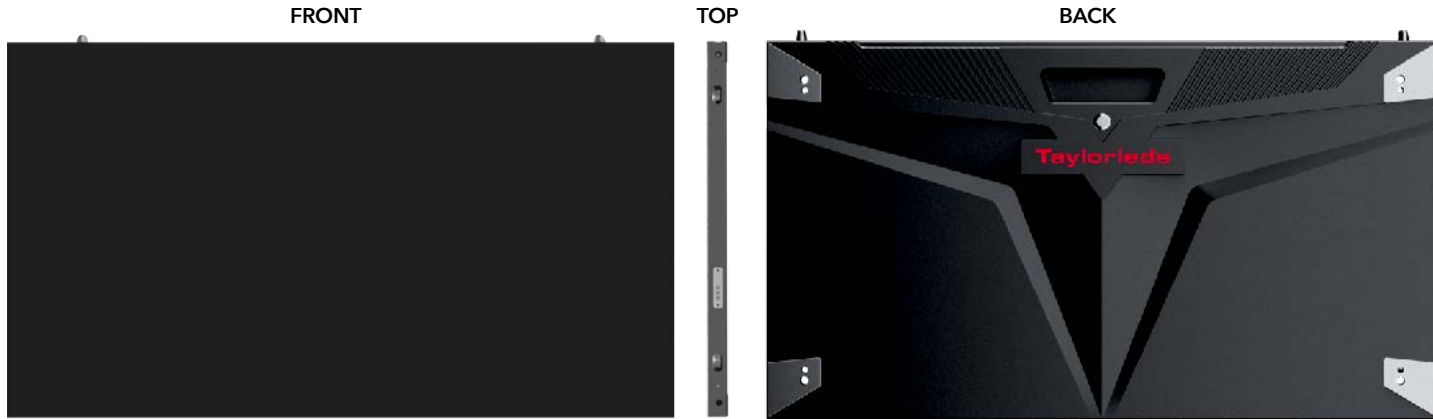
## MX30 - SF Exclusive to ATS-Pro

MX30 - SF and VMP software is an all-new display control software that integrates design, management, and monitoring into one single powerful platform when paired with the A10s Pro receiving card for stunning image quality.



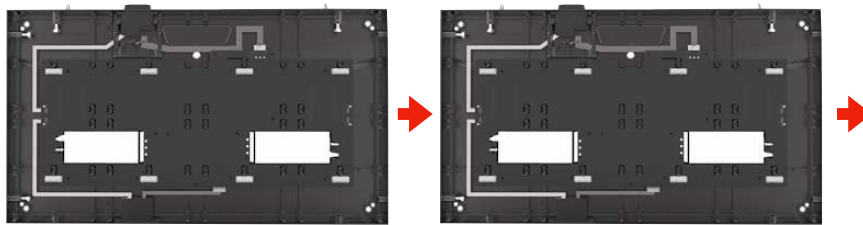
A10s Pro card works with all Novastar Processors such as the H-Series, VX and MCTRL but does not offer all of the features of the MX Series Processors.

# Unrivaled Panel Design

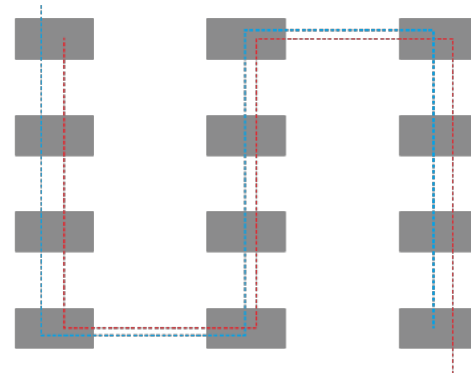


## Dual Power and Signal Option

- A backup PSU and receiver card can be installed
- Backup option for better stability



Backup IN

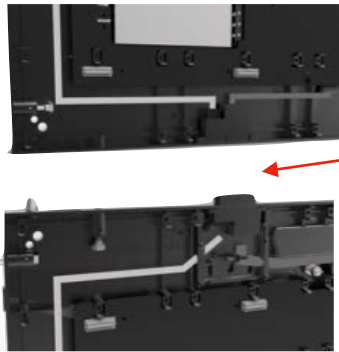


Main IN

# Unrivaled Panel Design

## Cable-less

- No cable between panels
- Retractable connectors
- No cable from module to panels



## Alignment Anchors for Perfect Flatness

- Two alignment pins on top
- Three alignment anchors on the side



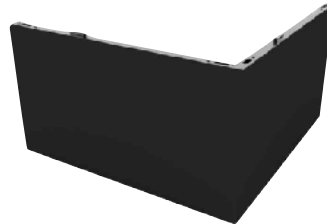
## 100% Front Serviceability

- Vacuum tool for modules
- Hubs and PSUs accessible from the front



## 90° Optional Corners

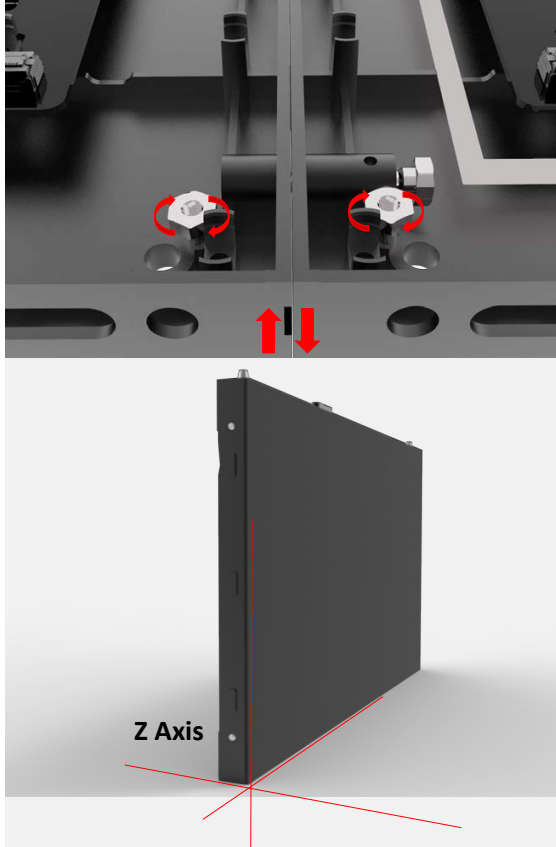
- 90° panels available to create corner screens to wrap walls and columns



# Unrivaled Panel Design

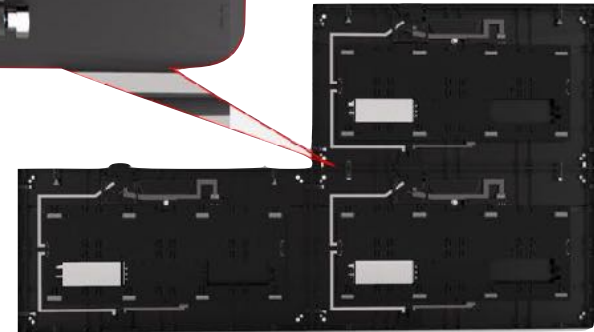
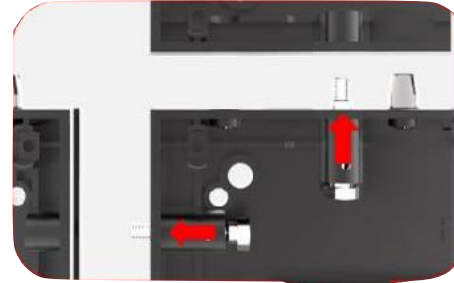
## Z Axis Adjustment

- Four screws per panel to adjust for uneven walls



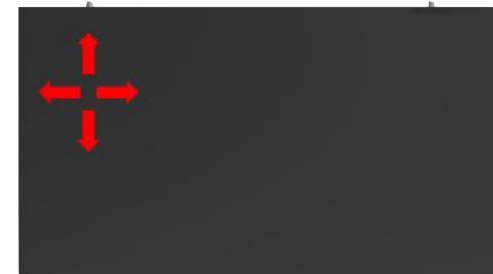
## All Captive Screws

- Two screws on top
- Two screws on the side



## Micro Module Adjustment

- Modules can be adjusted within 0.55mm
- Seamless screen



# Unrivaled Mounting Options



## Hanging Bracket

Specifically designed for WU Panels in 610mm and 1220mm wide options. Allows for 10 high panels high (16.4') and any wall width.



## Floor Stack

Specifically designed and affordable Floor Stack for WU panels. Cross bar option to lift rows off of the floor for better viewing while on stage.



## Wall Mount

Specifically designed wall mount system for WU panels. Brackets are modular designed and easily connect together.







### 3840 X 2160 LAYOUT MATRIX



	0.95						1.2		1.58		1.9		2,54			
	1	2	3	4	5	6	7	8	9	10	11	12	13	14	15	16
1	0.95	0.95	0.95	0.95	0.95	0.95	1.2	1.2	1.58	1.58	1.9	1.9	2,54	2,54	2,54	2,54
2	0.95	0.95	0.95	0.95	0.95	0.95	1.2	1.2	1.58	1.58	1.9	1.9	2,54	2,54	2,54	2,54
3	0.95	0.95	0.95	0.95	0.95	0.95	1.2	1.2	1.58	1.58	1.9	1.9	2,54	2,54	2,54	2,54
4	0.95	0.95	0.95	0.95	0.95	0.95	1.2	1.2	1.58	1.58	1.9	1.9	2,54	2,54	2,54	2,54
5	0.95	0.95	0.95	0.95	0.95	0.95	1.2	1.2	1.58	1.58	1.9	1.9	2,54	2,54	2,54	2,54
6	0.95	0.95	0.95	0.95	0.95	0.95	1.2	1.2	1.58	1.58	1.9	1.9	2,54	2,54	2,54	2,54
7	1.2	1.2	1.2	1.2	1.2	1.2	1.2	1.2	1.58	1.58	1.9	1.9	2,54	2,54	2,54	2,54
8	1.2	1.2	1.2	1.2	1.2	1.2	1.2	1.2	1.58	1.58	1.9	1.9	2,54	2,54	2,54	2,54
9	1.58	1.58	1.58	1.58	1.58	1.58	1.58	1.58	1.58	1.58	1.9	1.9	2,54	2,54	2,54	2,54
10	1.58	1.58	1.58	1.58	1.58	1.58	1.58	1.58	1.58	1.58	1.9	1.9	2,54	2,54	2,54	2,54
11	1.9	1.9	1.9	1.9	1.9	1.9	1.9	1.9	1.9	1.9	1.9	1.9	2,54	2,54	2,54	2,54
12	1.9	1.9	1.9	1.9	1.9	1.9	1.9	1.9	1.9	1.9	1.9	1.9	2,54	2,54	2,54	2,54
13	2,54	2,54	2,54	2,54	2,54	2,54	2,54	2,54	2,54	2,54	2,54	2,54	2,54	2,54	2,54	2,54
14	2,54	2,54	2,54	2,54	2,54	2,54	2,54	2,54	2,54	2,54	2,54	2,54	2,54	2,54	2,54	2,54
15	2,54	2,54	2,54	2,54	2,54	2,54	2,54	2,54	2,54	2,54	2,54	2,54	2,54	2,54	2,54	2,54
16	2,54	2,54	2,54	2,54	2,54	2,54	2,54	2,54	2,54	2,54	2,54	2,54	2,54	2,54	2,54	2,54

2023 ATS-PRO WU PRO SERIES MODULAR INDOOR LED MADE FOR ATS-PRO BY: **Taylorleds**





1920 X 1080 LAYOUT MATRIX



	0.95			1.2	1.58	1.9	2.54									
	1	2	3	4	5	6	7	8	9	10	11	12	13	14	15	16
1	0.95	0.95	0.95	1.2	1.58	1.9	2.54	2.54								
2	0.95	0.95	0.95	1.2	1.58	1.9	2.54	2.54								
3	0.95	0.95	0.95	1.2	1.58	1.9	2.54	2.54								
4	1.2	1.2	1.2	1.2	1.58	1.9	2.54	2.54								
5	1.2	1.2	1.2	1.2	1.58	1.9	2.54	2.54								
6	1.9	1.9	1.9	1.9	1.9	1.9	2.54	2.54								
7	2.54	2.54	2.54	2.54	2.54	2.54	2.54	2.54								
8	2.54	2.54	2.54	2.54	2.54	2.54	2.54	2.54								
9																
10																
11																
12																
13																
14																
15																
16																



# Specifications

2023 ATS-PRO WU PRO SERIES MODULAR INDOOR LED



SPECIFICATIONS	WU PRO 1.2	WU PRO 1.5	WU PRO 1.9	WU PRO 2.5
LED Type	SMD 3 in 1 1010	SMD 3 in 1 1010	SMD 3 in 1 1515	SMD 3 in 1 2121
Pixel Pitch (mm)	1.27	1.58	1.9	2.54
Panel Dimensions (W*H*D)/(mm)	610×343×34	610×343×34	610×343×34	610×343×34
Panel Weight (kg)	4.8	4.8	4.8	4.8
Pixel Per Panel (w, h)	480 * 270	384 * 216	320*180	240*135
Panel Material	Die Casting Aluminum	Die Casting Aluminum	Die Casting Aluminum	Die Casting Aluminum
Module Dimensions (W*H)/(mm)	152.5×343	152.5×343	152.5×343	152.5×343
Brightness (nit)	600	600	800	1000
Refresh Rate (Hz)	1920/3840	1920/3840	1920/3840	1920/3840
Gray scale (bit)	13 Bit/14 Bit	13 Bit/14 Bit	13 Bit/14 Bit	13 Bit/14 Bit
Contrast Ratio	3000:1	4000:1	4000:1	4000:1
Color Temperature (K)	6500	6500	6500	6500
Viewing Angle (H/V) (°)	160/140	160/140	160/140	160/140
AC Operating Voltage (V)	100~240	100~240	100~240	100~240
Power Consumption Max./Avg.) (W/m²)	630/210	610/203	540/180	610/203
Storage Temperature (°C)	- 40~ + 60	- 40~ + 60	- 40~ + 60	- 40~ + 60
Operating Temperature (°C)	- 10~ + 40	- 10~ + 40	- 10~ + 40	- 10~ + 40
IP Rating (Front/Rear)	IP40/IP21	IP40/IP21	IP40/IP21	IP40/IP21
LED Lifetime (H)	100000	100000	100000	100000
Module Maintenance	Front	Front	Front	Front
PSU & Others Maintenance	Front	Front	Front	Front
Panel Installation Type	Wall / Stacking / Hanging	Wall / Stacking / Hanging	Wall / Stacking / Hanging	Wall / Stacking / Hanging
Maximum Rigging QTY	10	10	10	10
Certification	UL/CE/ FCC	UL/CE/ FCC	UL/CE/ FCC	UL/CE/ FCC

Specifications subject to change. Please contact ATS-Pro for updated Specifications

