

SPROLINK®

CREATIVE VIDEO REVOLUTION



VD8

MODULAR VIDEO WALL CONTROLLER
3D/4K PIXEL-TO-PIXEL LARGE SCALE SOLUTION

www.sprolink.com

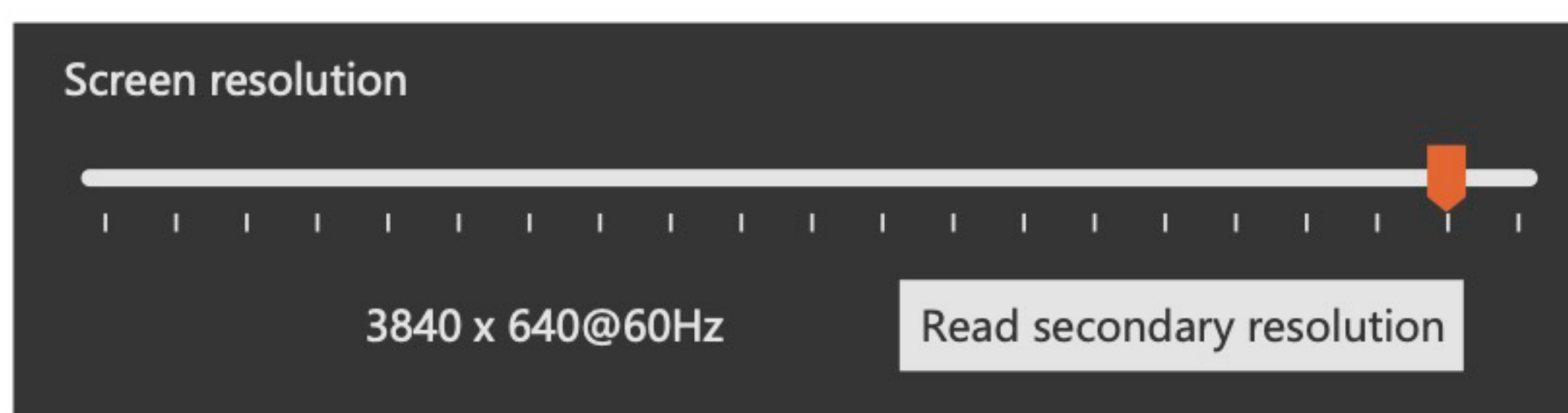
1 FEATURES

- Customize Output Resolution by Module
- EDID Management
- 3D Splicing and Switching
- Pixel-to-Pixel Splicing of Multi-channel 4K Input
- Visualization Software

2 MAIN FUNCTION

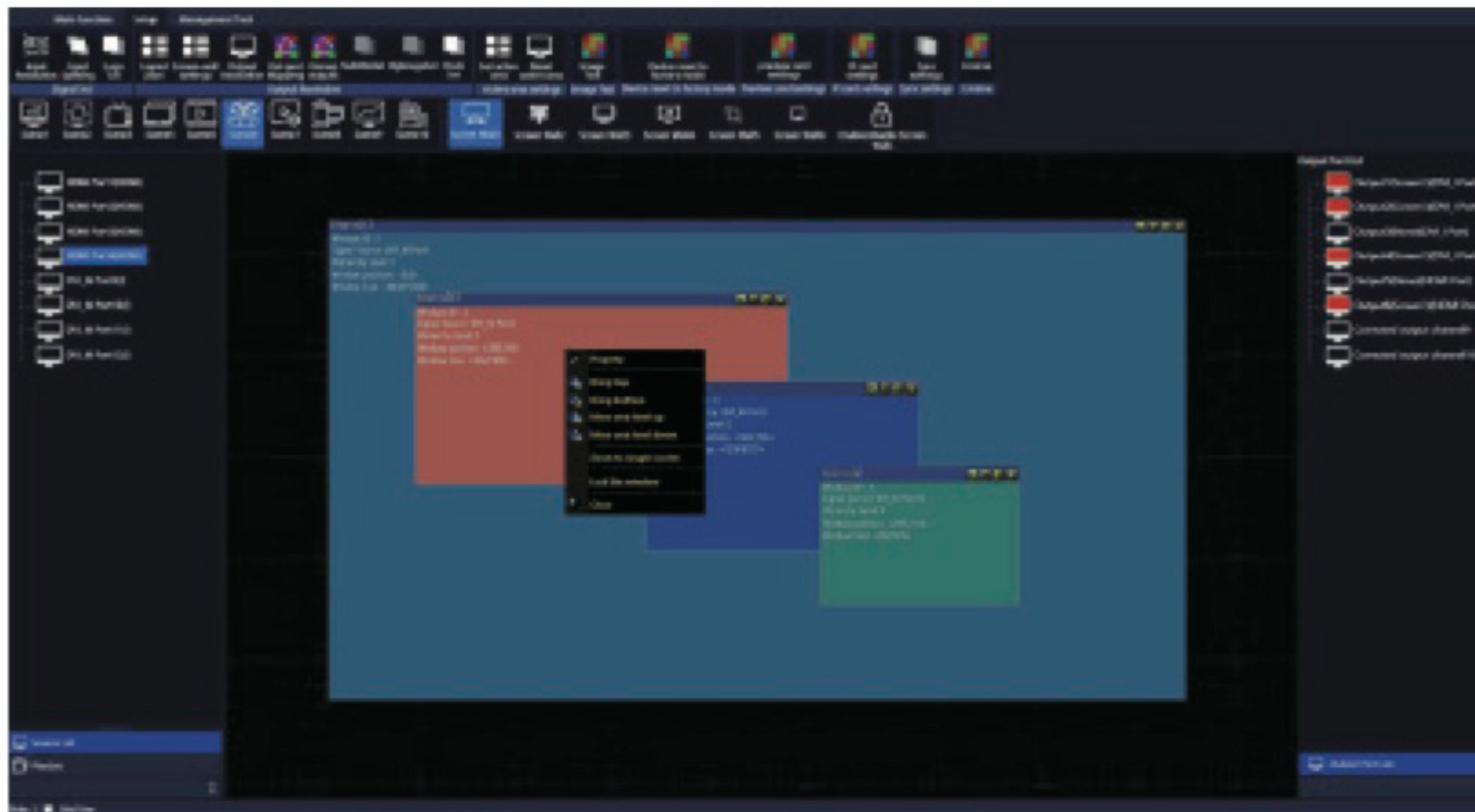
Customize Output Resolution by Module

Each installed module can be independently configured for resolution within 3840 in horizontal and 2048 in vertical. One unit Support multiple Screen with different resolution.



Visualization Software

Input & Output virtual preview by software. Ideal for real-time editing.



3D Splicing

Support left and right eye 3D splicing mode, 120HZ input and output 3D splicing mode. With internal Genlock 3D seamless split fusion, Switching between 2D and 3D switching between 2D and 3D mode could be done by software.



Control through iPad

Wireless control via iPad, support different preset switching. Offer Open API for third party control.



- IPAD Control
- Projection Edge Blending
- Display up to 8 Layers by Single Port
- Expandable I/O slots
- Redundant Power Supply

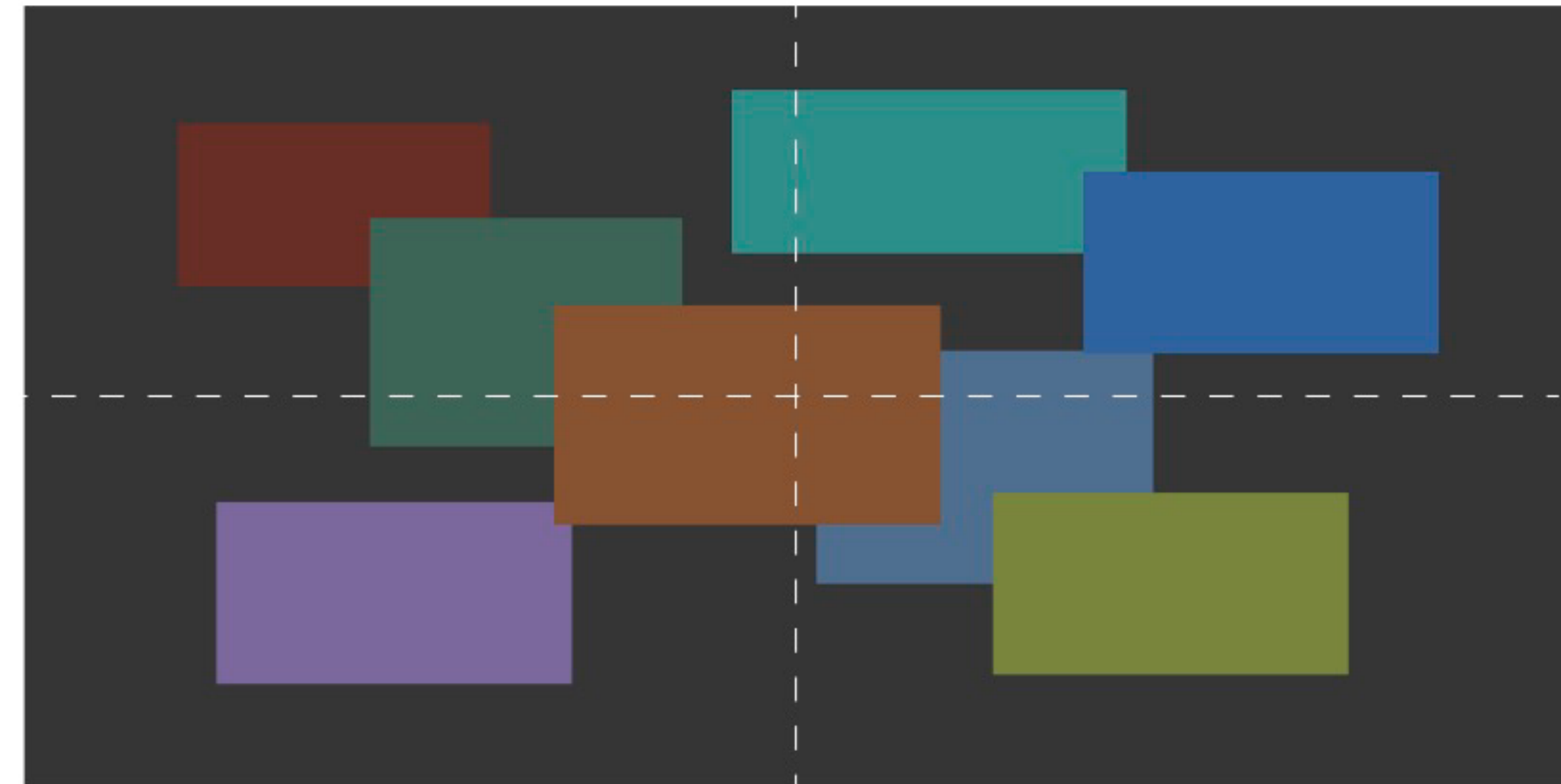
EDID Management

Customize input EDID: Support program PC to identify customized resolution, makes "Pixel by Pixel" much easier



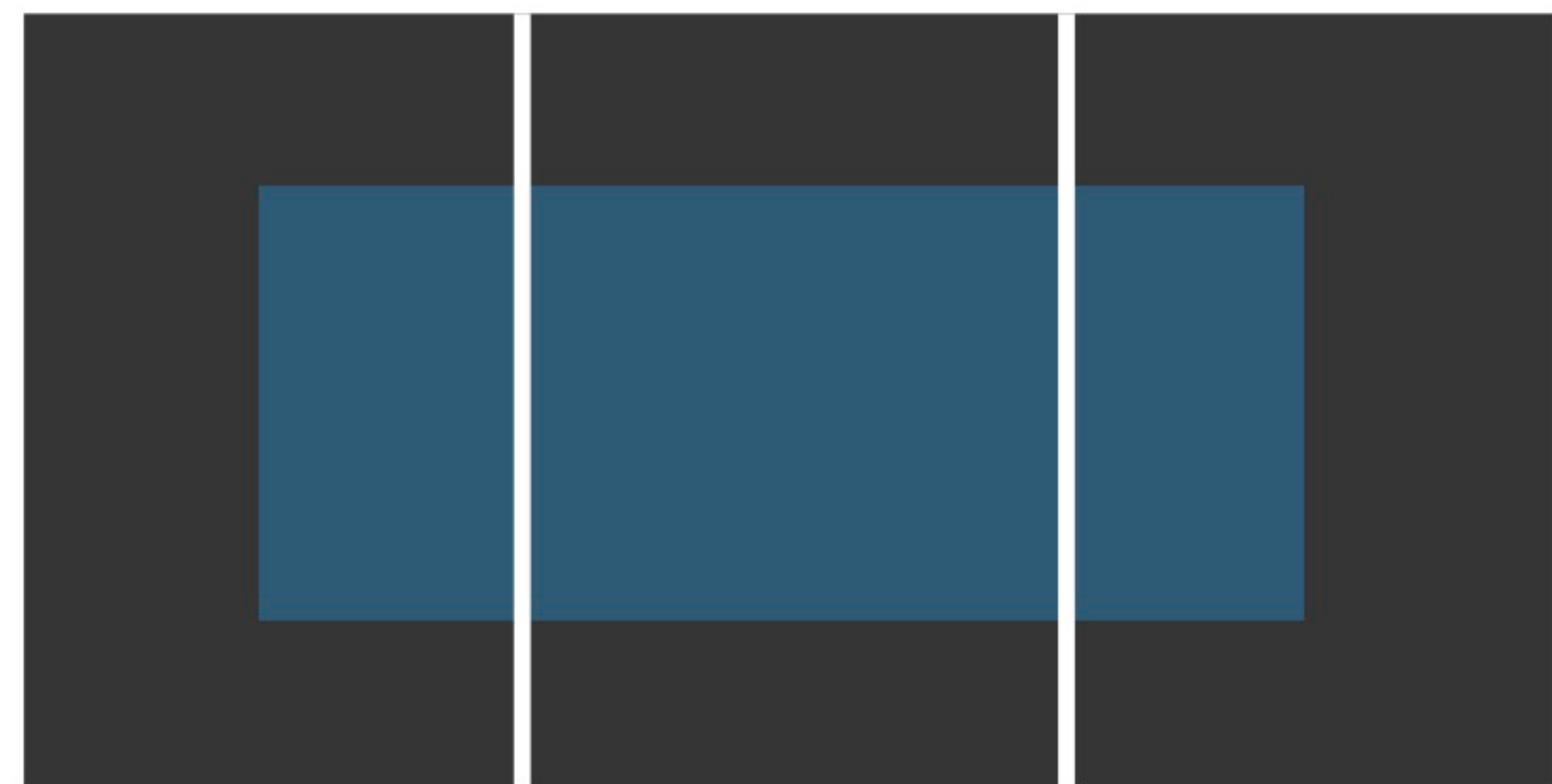
Display up to 8 Layers by Single Port

One single port of the output module supports 8 images at the same time. Total 8 layers processing, support any overlapping at any position on the video wall.



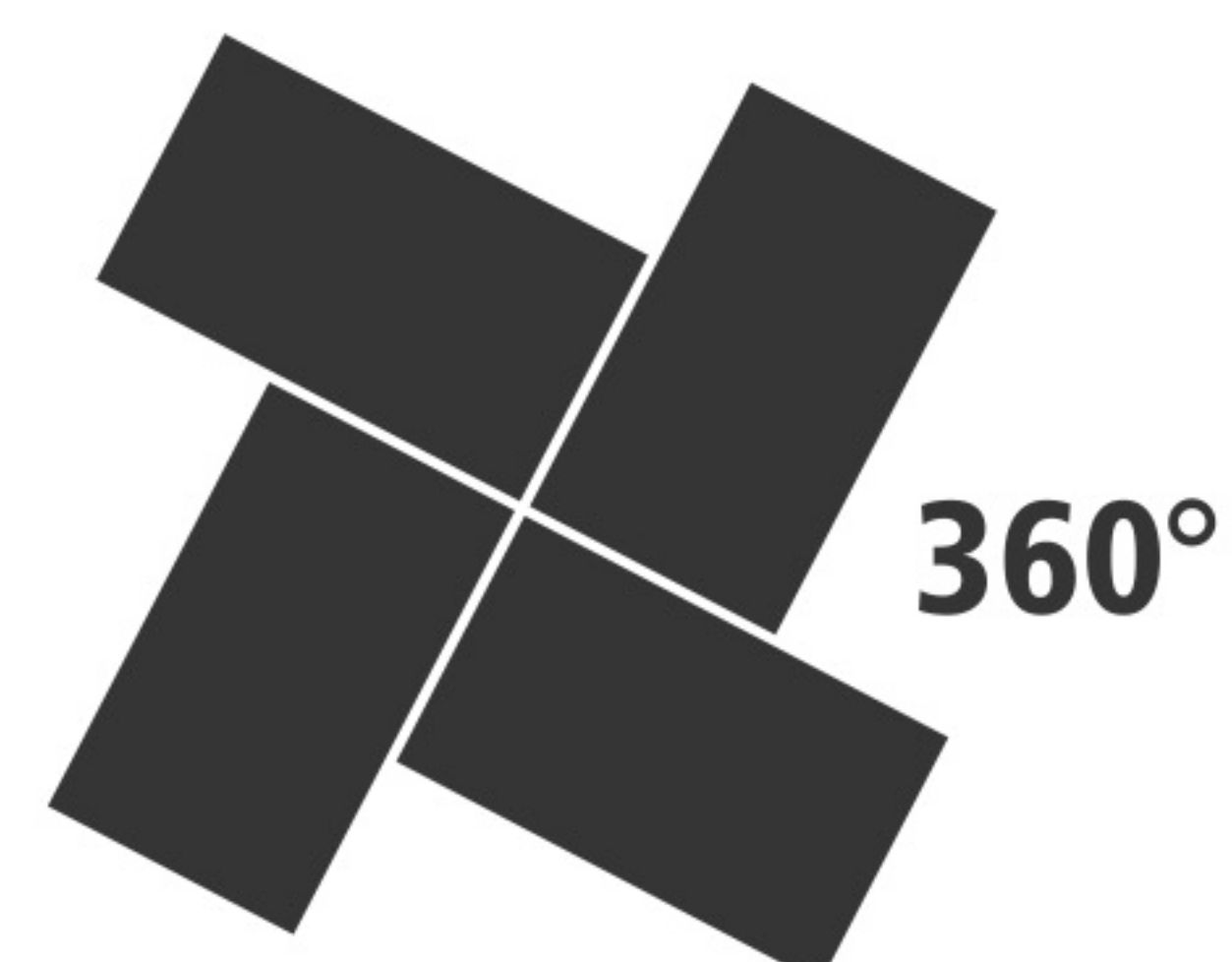
4K Pixel-to-Pixel Splicing

support multi-channel 4K input to realize wide range screen pixel to pixel splicing with internal Genlock Sync.



0-360° degree rotation splicing

Support any degree (0-360°) rotation splicing between different sizes, different screen LED/LCD/Projectors.

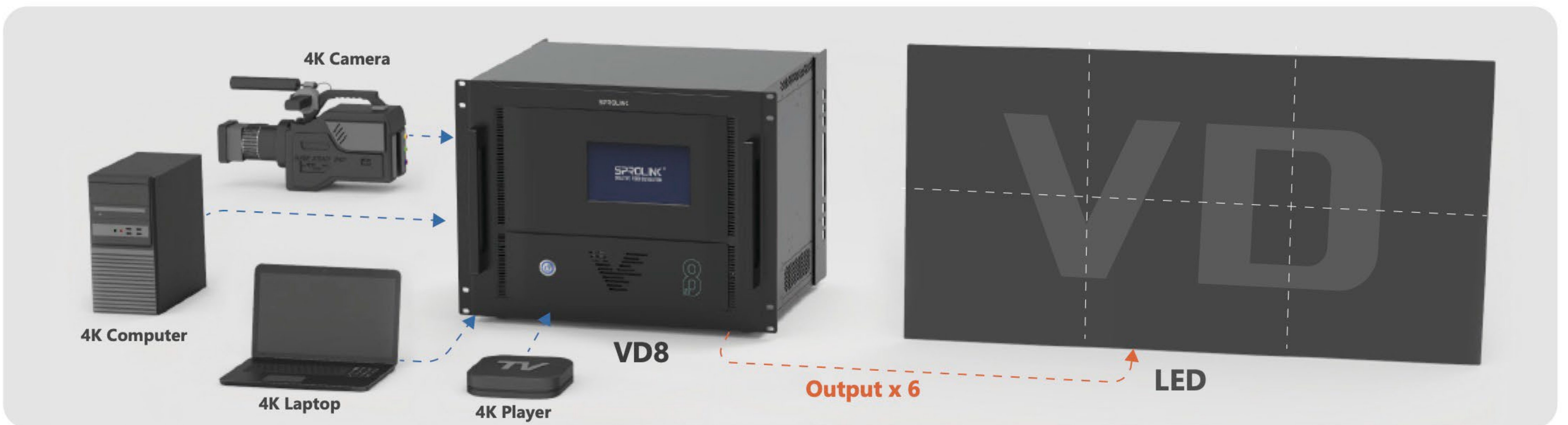


3 SOLUTIONS

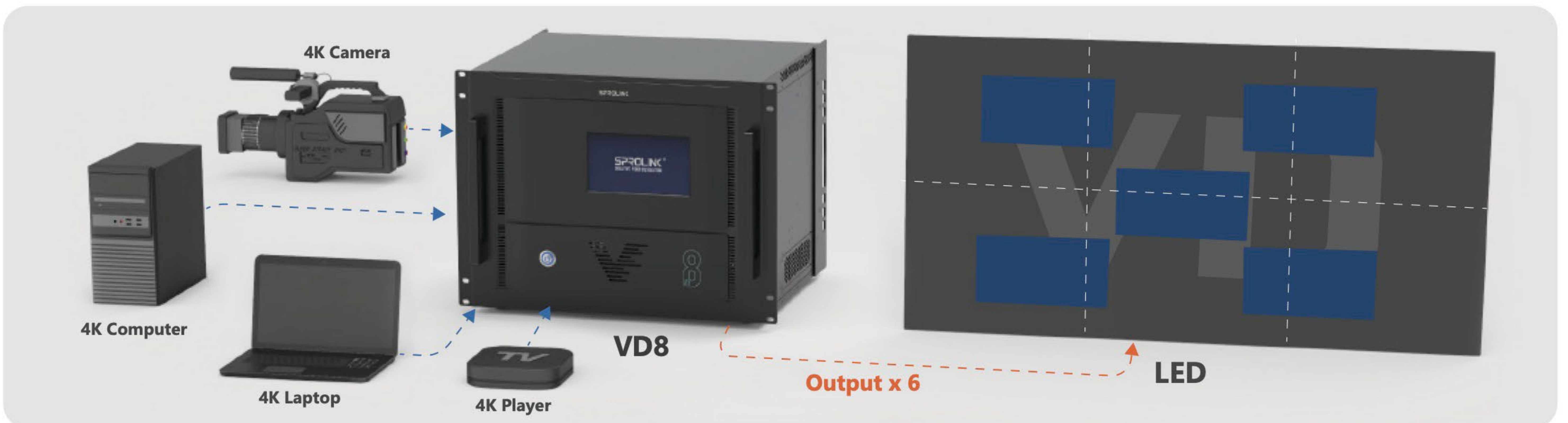
Solution 1: One input to multiple outputs in scaling mode



Solution 2: Multiple inputs and outputs in pixel to pixel splicing mode



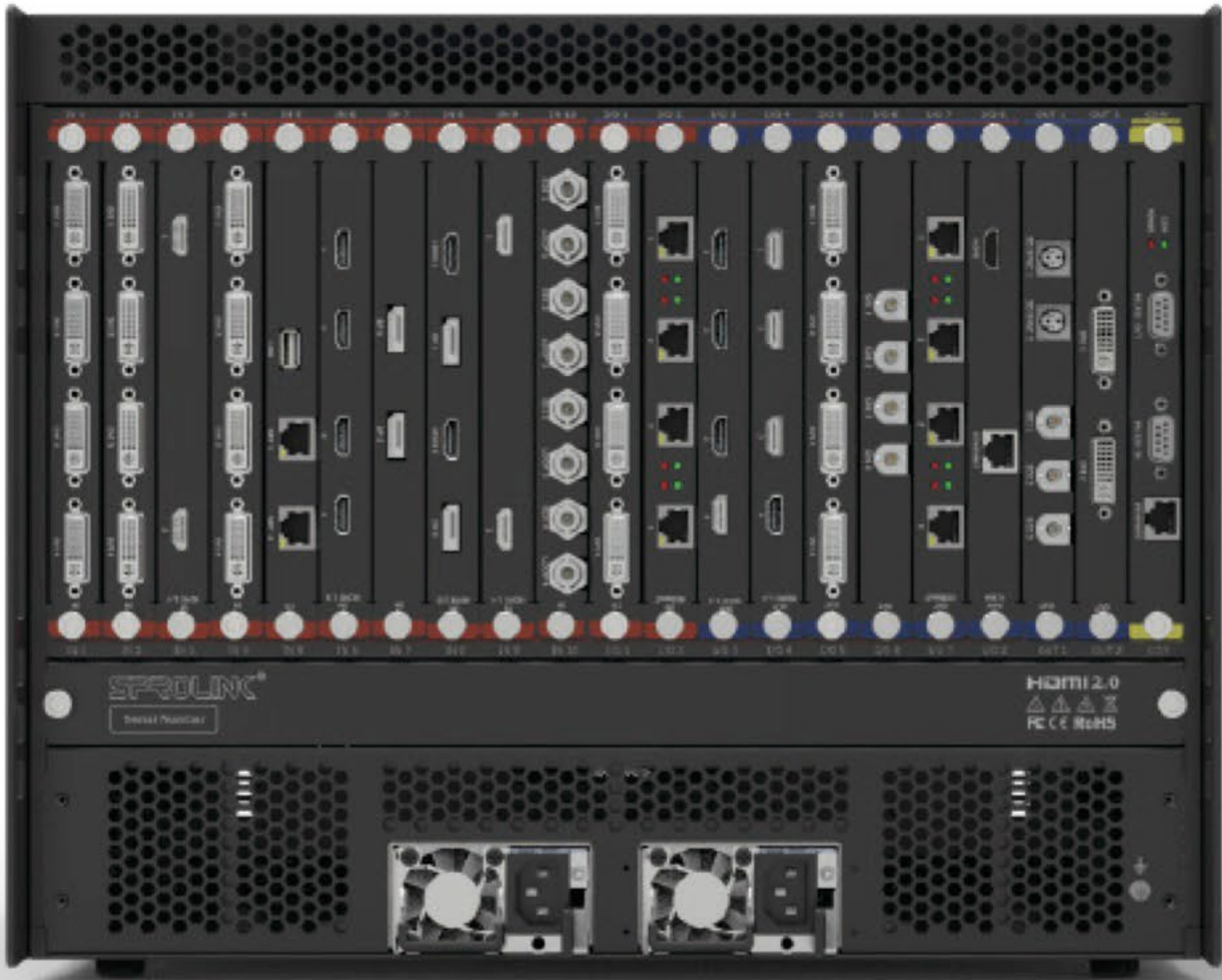
Solution 3: Multiviewer and video wall controller all-in-one function



Solution 4: Connect to LED, LCD or projection screen in matrix mode



4 SPECIFICATION



Input module	4 x HDMI 1.3	 Resolution: 2K	Output module	4 x HDMI 1.3	 Resolution: 2K	
	2 x HDMI 1.4	 Resolution: 2K\4K2K@30Hz		2 x HDMI 1.4	 Resolution: 2K\4K2K@30Hz	
	2 x 4K@60hz HDMI /DP	 Resolution: 2K\4K2K@30Hz\4K2K@60Hz		1 x HDMI 1 x RJ45	 Resolution: 2K	
	4 x HDbaseT	 Resolution: 2K		4 x HDbaseT	 Resolution: 2K	
	4 x DVI-M	 Resolution: 2K		2 x DVI	 Resolution: 2K	
	2 x IP 1 x USB	 Resolution: 2K		4 x DVI-M	 Resolution: 2K	
	2 x DP1.1	 Resolution: 4K30Hz		2 x HDMI 2.0	 Resolution: Within 3840*2160@60Hz	
	4 x SDI	 Resolution: 3G/HD/SD		4 x SDI	 Resolution: 2K	
System control card	2 x RS232 1 x RJ45	 Default IP: 192.168.1.200				
Device	Input voltage		Dimension	Device Weight		
	AC input 100V~240V, 50/60Hz			12KG		
	Power consumption			Device Dimensions		
	depends on module qty			485 x 390 x 180mm		
Storage Temperature			Package Weight			
0-70°C			15KG			
Storage Humidity			Package Dimensions			
15-85%			525 x 440 x 225mm			