

# Taylorleds



# WX Pro

UNMATCHED VISUAL PERFORMANCE.

7680Hz refresh rate. Pure motion. Maximum impact.

WX PRO SERIES 1.2mm, 1.5mm, 1.8mm, 2.5mm, 3.7mm

2026 WX PRO SERIES MODULAR INDOOR LED MADE FOR ATS-PRO BY TAYLORLEDS

ATS  
PRO



## Masters in the Art of LED

Welcome to ATS-Pro, the exclusive U.S. distributor for Taylorleds. With nearly two decades of experience in the AV industry, I founded ATS-Pro to bring unmatched expertise and innovation to our clients.

Taylorleds, our esteemed partner, is an innovative joint venture with Absen, excelling in design, R&D, and quality control. Absen, a leading Chinese manufacturer, handles production, ensuring top-notch quality. Together, we present the most advanced LED systems, meticulously crafted for superior performance.

At ATS-Pro, our dedicated account managers, top-tier technical support, and industry thought leaders work tirelessly to help you master the art of LED technology. I invite you to explore our brochures and experience innovation at its finest.

Warm regards,

*Chris Pelzan*

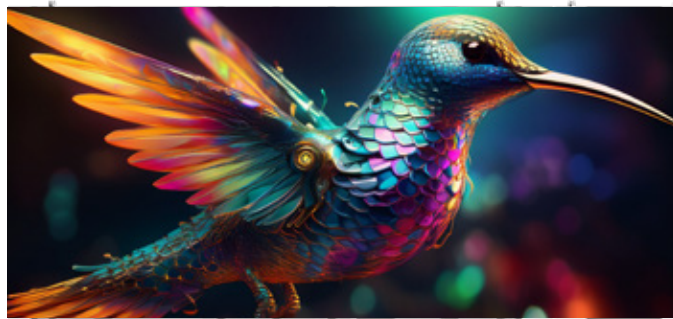


## WX Pro: More of everything — speed, depth, and brilliance. Still light as ever.

The WX Pro Series was originally designed as an affordable indoor LED display solution for corporate, entertainment, sports, education, and house of worship markets. However, it has evolved into a hallmark of precision engineering, visual performance, product versatility, and user experience.



With base panels 2.56 times larger than standard 16:9 cabinets, the WX Pro enables faster installations and cleaner, more seamless visual surfaces. Its ultra-thin profile—just over 1" in depth—houses custom-developed power supplies and an integrated hub card, all within a sleek chassis that supports wireless connection and three versatile mounting options: rigging, stacking, and wall-mount.



Now upgraded with a 7680Hz refresh rate, 16-bit grayscale, and enhanced peak brightness for higher dynamic contrast, the WX Pro Series delivers ultra-smooth motion, deeper blacks, and eye-catching highlights. Backed by the industry's most powerful processing hardware, it redefines what's possible for lightweight indoor LED displays—setting a new benchmark for performance, reliability, and efficiency in the ProAV market.



---

# High Refresh Rate: 7680Hz

The WX Pro Series features a 7680Hz refresh rate powered by advanced driver ICs and PWM optimization. By extending the pulse width through PAM (Pulse-Amplitude Modulation), the display allows for longer on-times per frame, eliminating visible flicker and ensuring smooth, stable playback—even in low grayscale conditions.



# Brightness

## More Brilliance, Enhanced Contrast

In scenes with high contrast and varying grayscale levels, the WX Pro Series intelligently boosts brightness in the brightest regions using advanced pulse modulation (PAM) and upgraded driver ICs. This enhances dynamic contrast—making highlights more vivid and impactful—while maintaining overall power efficiency. The result is a more immersive visual experience with greater depth and clarity in both bright and mixed-light environments.



# Darkness

## Sharper Detail in Darker Shades

To enhance image detail in low-brightness areas, PAM precisely reduces the LED driving current at the lowest grayscale levels. With real-time current control per LED and grayscale, the system delivers ultra-fine brightness control - accurate down to 0.001 nits - ensuring subtle shadows and textures are clearly visible without loss of detail.



---

# Elevated Panel Design with Pro Features

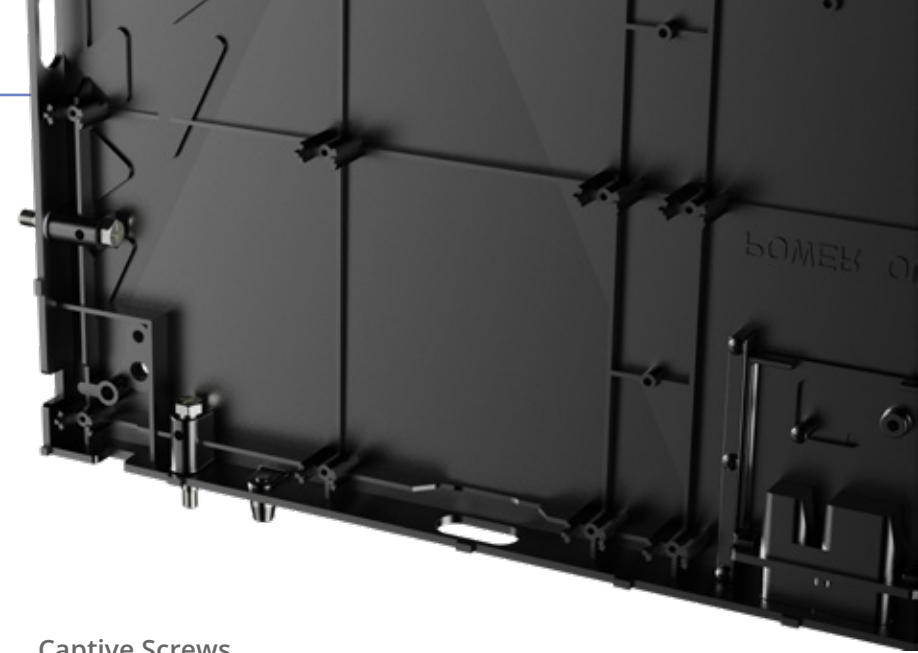
## True 16:9 Ratio

16 x 9 panel allowing perfect aspect ratios that match any HD format without the need for scalers or external video processing.



## Larger Base Panel

The main base panel is 960 mm x 540 mm. This means a large wall will require fewer panels and seams to adjust, equaling faster installation.



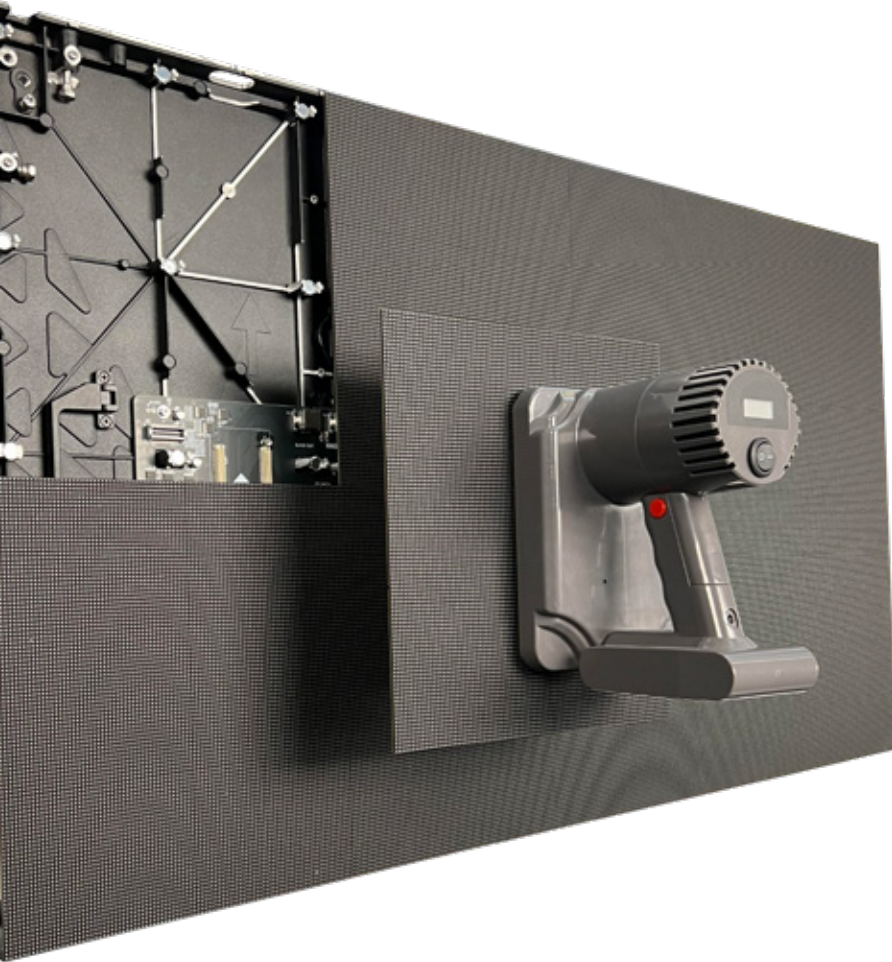
## Captive Screws

For ease of installation, panels have captive screws. (2) on the top and (2) on the side. No more searching for missing hardware.





Super thin Barely over 1" thick panel (28.5 mm / 1 1/8").



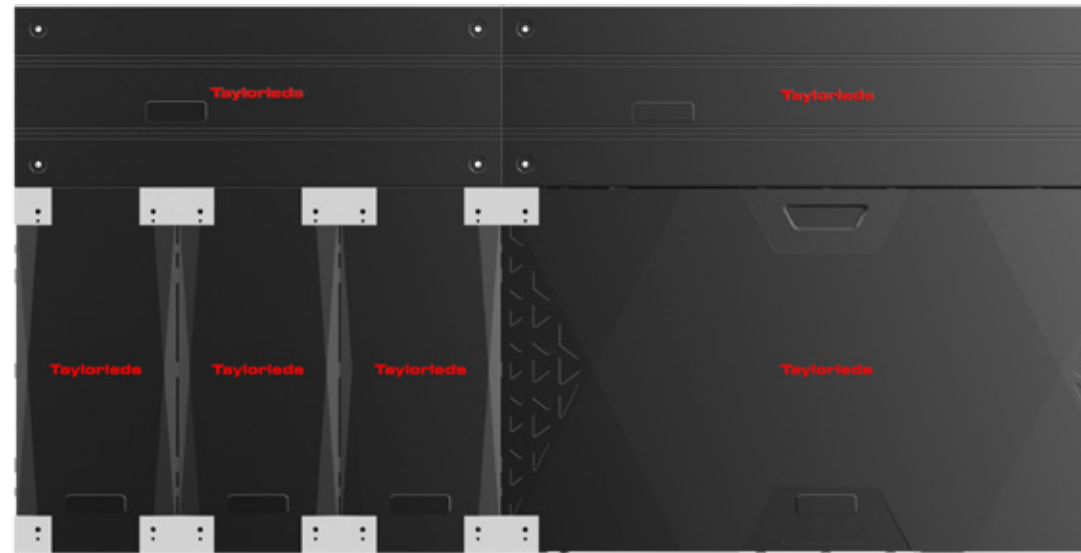
## Front Serviceable

The WX Pro LED display is engineered for maximum convenience and efficiency, featuring a front serviceable design. This allows for easy access to both the power units and LED modules, enabling swift removal and replacement directly from the front of the display. As a result, maintenance time and effort are significantly reduced, ensuring minimal disruption and enhanced operational reliability.

## Multiple panel sizes

Multiple panel sizes to build almost any size LED wall imaginable...

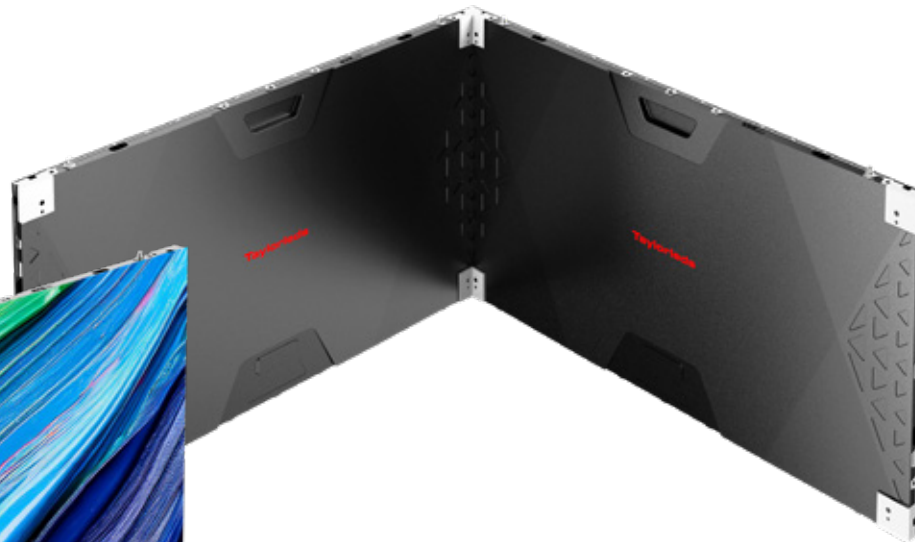
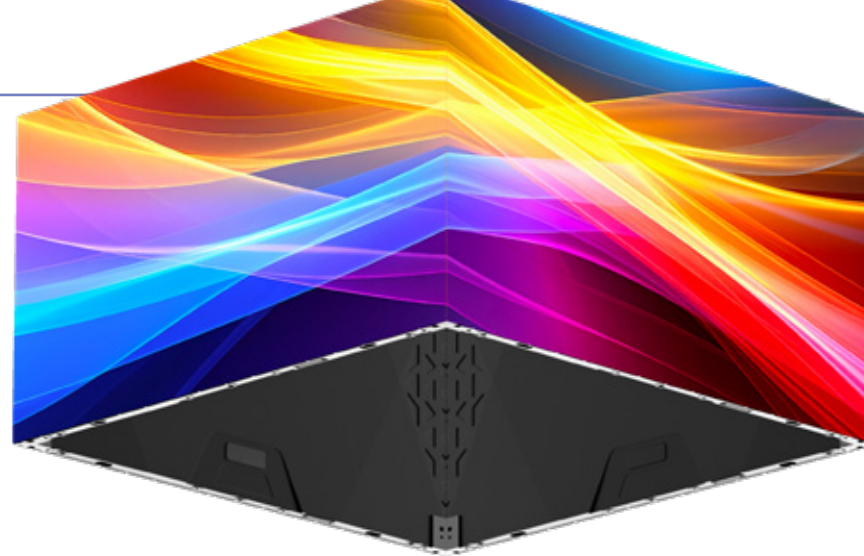
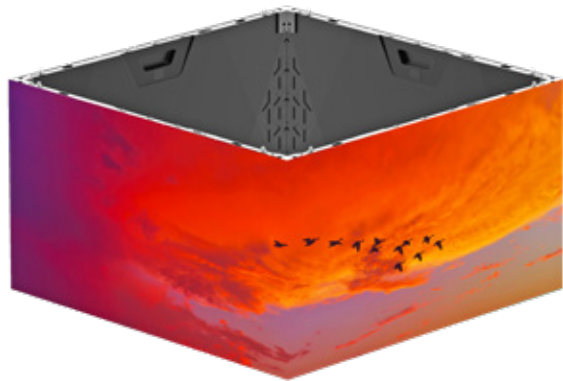
- 960 x 540 x 28.5
- 240 x 540 x 28.5
- 480 x 540 x 28.5
- 480 x 270 x 28.5
- 720 x 270 x 28.5
- 960 x 270 x 28.5



# Corners & Cubes

## Creative Applications

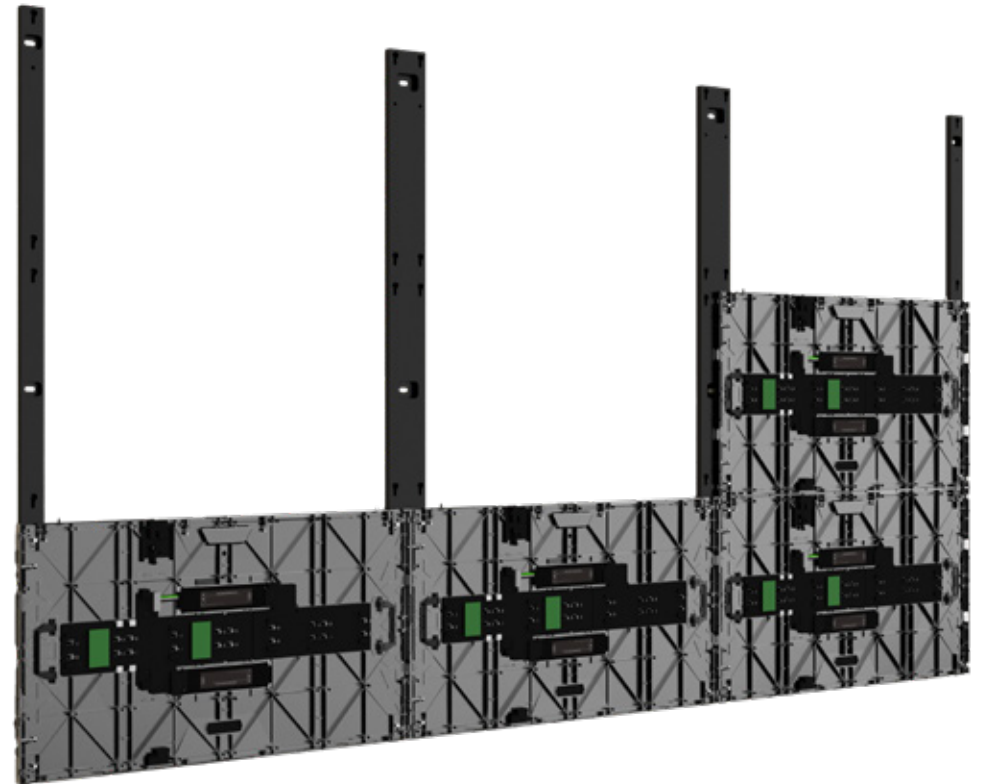
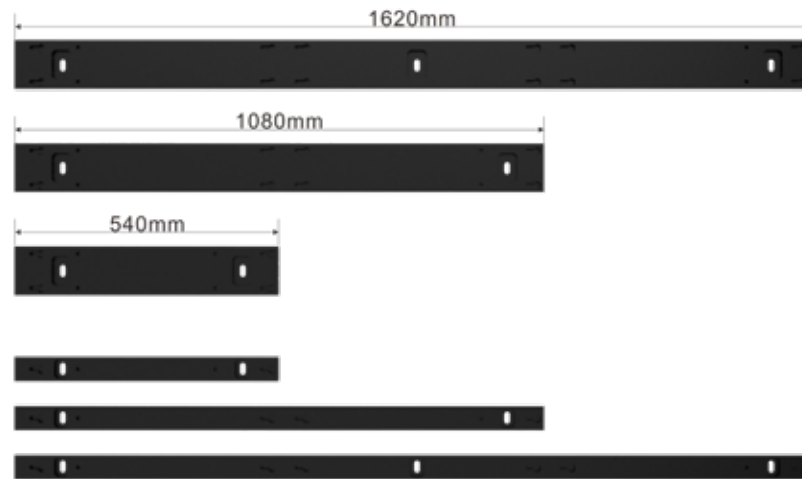
Create 45° corners and cubes for free standing, hanging structures or wall wraps.



# Wall Mounting Options

## Wall Mount System

A wall-mount system specifically designed for WX Pro panels, featuring modular brackets that easily connect for fast, seamless installation.



# Hanging Options

## Rigging System

Designed for ease and efficiency, the super lightweight hanging bars come with integrated curve plates, making them simple to use when installing the panels.



---

# Floor Stack Option

## Stacking System

Designed by industry veterans, the universal stacking system for LED panels is both easy to use and highly reliable, ensuring quick setup and teardown.



# Specifications

ATS-PRO WX Pro Series Modular LED panel shown. Additional frame sizes available.

Specifications	WX Pro 1.2	WX Pro 1.5	WX Pro 1.8	WX Pro 2.5	WX Pro 3.7
LED Type	SMD 3 in 1 1010	SMD 3 in 1 1212	SMD 3 in 1 1515	SMD 3 in 1 1515	SMD 3 in 1 1515
Pixel Pitch (mm)	1.25	1.5	1.87	2.5	3.75
Panel Dimensions (W*H*D)/(mm)	960 x 540 x 28.5	960 x 540 x 28.5	960 x 540 x 28.5	960 x 540 x 28.5	960 x 540 x 28.5
Panel Weight (kg)	11.5	11.5	11.5	11.5	11.5
Pixel Per Panel (w, h)	768 x 432	640 x 360	512 x 288	384 x 216	256 x 144
Panel Material	Die Casting Aluminum	Die Casting Aluminum	Die Casting Aluminum	Die Casting Aluminum	Die Casting Aluminum
Module Dimensions (W*H)/(mm)	240 x 270	240 x 270	240 x 270	240 x 270	240 x 270
Brightness (nit)	600	800	800	800	800
Refresh Rate (Hz)	7680	7680	7680	7680	7680
Grayscale (bit)	14	16	16	16	16
Contrast Ratio	3500:1	4000:1	4000:1	4500:1	5200:1
Color Temperature (K)	6500	6500	6500	6500	6500
Viewing Angle (H/V) (°)	140/120	150/150	160/160	160/160	160/160
AC Operating Voltage (V)	100~240	100~240	100~240	100~240	100~240
Power Consumption (Max./Avg.) (W/m <sup>2</sup> )	420/140	480/160	420/140	450/150	480/160
Storage Temperature (°C)	-40~ + 60	-40~ + 60	-40~ + 60	-40~ + 60	-40~ + 60
Operating Temperature (°C)	-10~ + 40	-10~ + 40	-10~ + 40	-10~ + 40	-10~ + 40
IP Rating (Front/Rear)	IP40/IP21	IP40/IP21	IP40/IP21	IP40/IP21	IP40/IP21
LED Lifetime (H)	100000	100000	100000	100000	100000
Module Maintenance	Front	Front	Front	Front	Front
PSU & Others Maintenance	Front	Front	Front	Front	Front
Panel Installation Type	Wall / Stacking / Hanging	Wall / Stacking / Hanging	Wall / Stacking / Hanging	Wall / Stacking / Hanging	Wall / Stacking / Hanging
Certification	UL/CE/FCC	UL/CE/FCC	UL/CE/FCC	UL/CE/FCC	UL/CE/FCC

Specifications subject to change. Please contact ATS-Pro for updated specifications.





## Masters in the Art of LED

©2026 ATS PRO. ATS PRO is a registered mark of Activate the Space, LLC. Specifications and design are subject to change without notice. Non-metric weights and measurements are approximate. Simulated screen images. All brand, product, service names and logos are trademarks and/or registered trademarks of their respective manufacturers and companies. See [ats-pro.com](https://www.ats-pro.com) for detailed information.

[www.ats-pro.com](https://www.ats-pro.com) | 800-755-3235

    @atsproled